

**April  
2020**

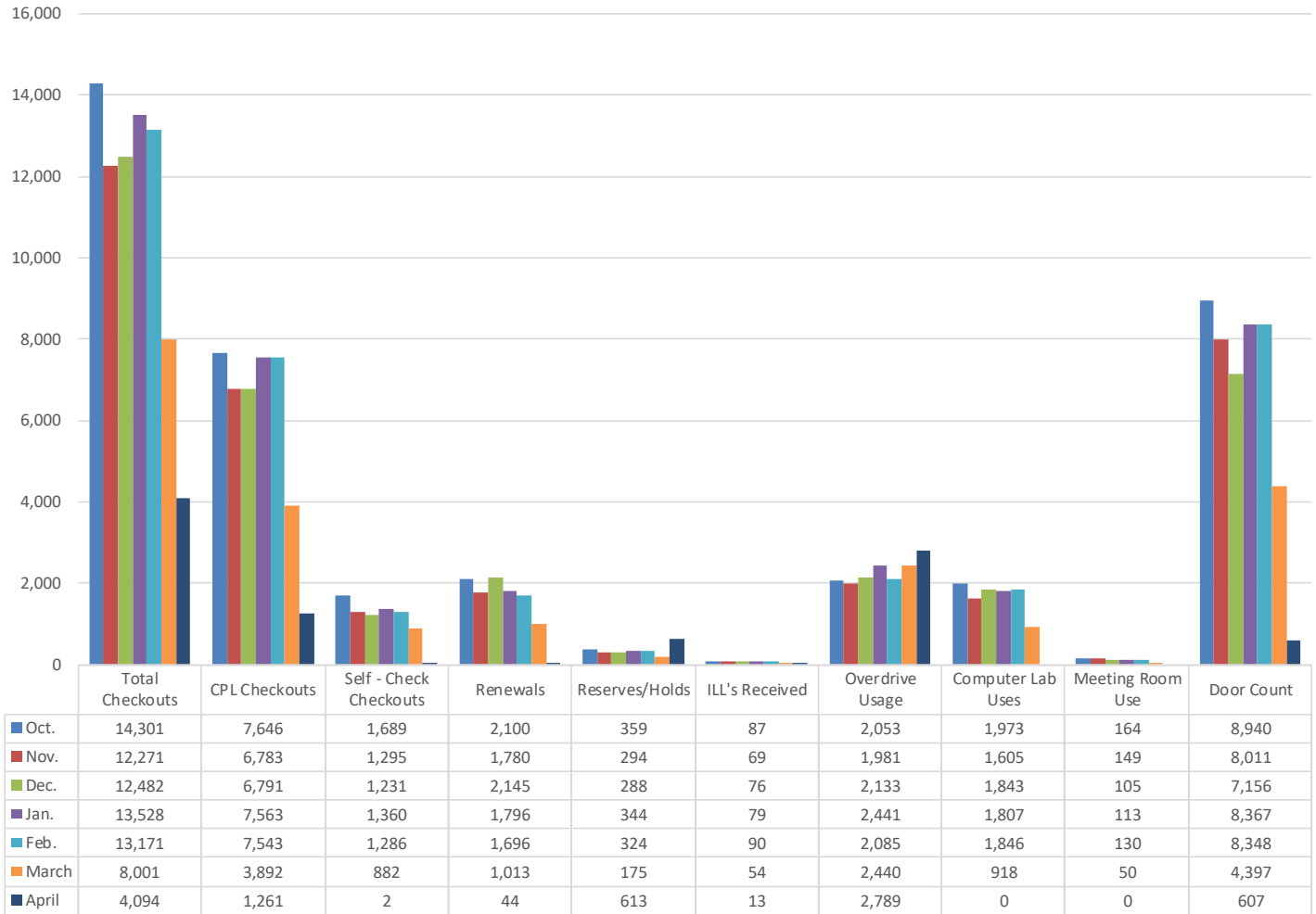
Karen Connell

# Columbus Public Library Director's Report

## Access Services, Circulation, & Discovery

Closed to the public beginning  
March 16 to limit public exposure  
during COVID-19 pandemic outbreak

Fiscal Year 2019-2020 Library Usage by Month



## Programs, Partnerships, Publicity

### Programs

- Activities and resources shared online and by mail
  - StoryTime videos, book clubs, tutorials for using Digital Library resources, etc.
- Modifying Summer Reading Program plans to focus on an online program for reading logs and activities.

### Partnerships

- Assisting with HyVee grocery delivery: taking orders as needed during the week with other city staff and delivering on Saturdays

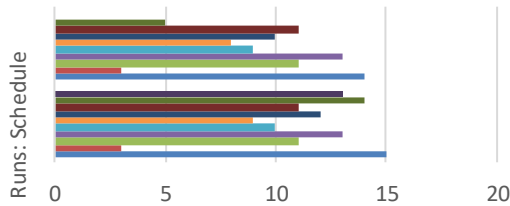
### Curbside Service

- Implemented on April 9 for materials checkout.
- Cardholders place holds on materials online or by phone.
- Materials are gathered and a pick up time is scheduled.
- Upon arrival, cardholders alert staff and wait for their items to be placed outside the building for retrieval.

# Platte County Library Service

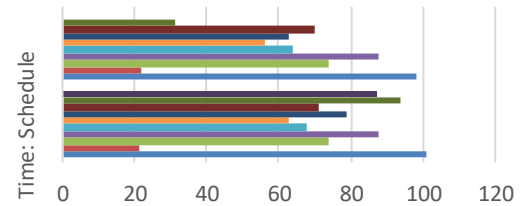
Schools closed beginning March 16 to limit exposure and community spread during COVID-19 pandemic outbreak

## Bookmobile Runs 3rd Year of Contract



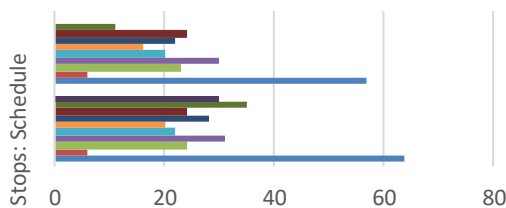
	Runs: Schedule	Runs: Actual
April	13	0
March	14	5
February	11	11
January	12	10
December	9	8
November	10	9
October	13	13
September	11	11
August	3	3
July	15	14

## Bookmobile Hours 3rd Year of Contract



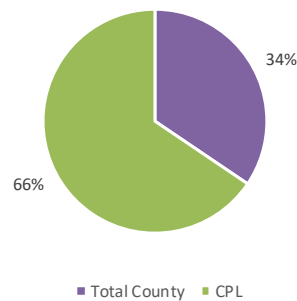
	Time: Schedule	Time: Actual
April	87	0
March	94	31
February	71	70
January	79	63
December	63	56
November	68	64
October	88	88
September	74	74
August	21	22
July	101	98

## Bookmobile Stops 3rd Year of Contract



	Stops: Schedule	Stops: Actual
April	30	0
March	35	11
February	24	24
January	28	22
December	20	16
November	22	20
October	31	30
September	24	23
August	6	6
July	64	57

## County Usage 3rd Year of Contract



Implemented Curbside Service on April 9 for materials check-out. Cardholders place holds on materials online or by phone. A pick up time is scheduled, during which the items are placed outside the building for retrieval.

## April 2020 Checkouts

